

2022

**ANNUAL
REPORT**



**MIRACLE
FOUNDATION**
-INDIA-



A Family For Every Child In Our Lifetime

TABLE OF CONTENTS

| | |
|------------------------------------|----|
| Message From Our Regional Director | 03 |
| Our Vision | 04 |
| Our Impact | 05 |
| Our Work | 06 |
| Our Highlights | 07 |
| Creating Systems Change | 09 |
| Program Areas | 10 |
| Financials | 11 |
| Thrive Scale Case Study | 12 |
| Our Partners | 13 |
| Looking Ahead | 14 |

HEAR FROM OUR REGIONAL DIRECTOR



This was an important year for us. With the belief that we cannot solve any problem alone and that our role is to support and strengthen the existing systems, we put together and finalized the model for scale and stepped into testing that model in 9 States in India. We formally forged the first direct partnership with the Government — in the States of Tamil Nadu, Kerala, and Madhya Pradesh.

This year, we were also able to represent and showcase our impact at global levels. We had third-party evaluations look at our Family-Based Alternative Care and Community-Based Prevention work, helping us strengthen our work further.

We moved ahead by building a state-of-the-art Thrive Scale™ app that, we believe, will be a game changer for us to move children to safe and stable families.

In the child protection space, we see a systems change every day. The Government launched Mission Vastalya this year — a landmark step towards keeping children safe. More children are going home from Child Care Institutions, more vulnerable families are being kept together, and our vision of “A Family for Every Child in Our Lifetime” feels more possible.

The world is changing, and our staff and supporters are at the center of that change. Just as we know there is greatness in every child we support, we know there is greatness in every supporter who helps a child. To all our partners at Miracle Foundation, to every impactful donor printed on the back of this report, and to anyone who stands up for a vulnerable child — you played a role in the success of this past year.

Warmly,

A handwritten signature in blue ink that reads "Kusum Mohapatra".

Kusum Mohapatra
Regional Director and India CEO,
Miracle Foundation India

Board of Directors

Indy Sarker
Shalini Puchalapalli
Ashok Kumar E R
Chhavi Rajawat
Rachna Dikshit

Advisors

Pari Jhaveri
Bidisha Fouzdar

Global Leadership

Caroline Boudreaux, Founder
Krishna Srinivasan,
Chairman, Global Board
Leslie Beasley, CEO

OUR VISION

A Family for Every Child in Our Lifetime.



Eliminating the Need for Orphanages Globally

Miracle Foundation is part of a movement to reunite orphaned children with their families. Collectively, with partners all over the world, we believe we can end the need for orphanages in our lifetime.



Ensuring Children Grow Up in a Safe, Stable Family

Miracle Foundation is working tirelessly to help stabilize children in families and prevent at-risk children from ever entering the system in the first place.



Our decisions are made by partnering with and investing in people with care experience and expertise.



OUR 2022 **IMPACT**



171,150 CHILDREN

APPROXIMATE OUTREACH OF
CHILDREN THROUGH OUR
TRAINED SOCIAL WORKFORCE



443 CHILDREN

REUNITED WITH
THEIR FAMILY



5,223 FAMILIES

SUPPORTED THROUGH
OUR PROGRAMS



1,753 CHILDREN

PREVENTED FROM
ENTERING THE SYSTEM



3,423 SOCIAL WORKFORCE

IMPACTED THROUGH
PROGRAMS



8,812 CHILDREN

IMPACTED DIRECTLY
THROUGH OUR PROGRAMS



OUR WORK

The word “every” is a powerful part of our vision. “A Family for Every Child” means we must focus both around the world and here at home, finding solutions for whatever challenges children face. How do we do it? With love and care, one child at a time.



Prevent Children From Entering the System

The crisis for vulnerable children will never end until we stop it at the source. This means identifying vulnerable families long before separations become necessary



Unite Children with Families

We reintegrate children with families. This isn't just about sending children home from Child Care Institutions. It's about ensuring the home that's waiting is safe and a thriving environment for children to grow up in.

OUR HIGHLIGHTS

FAMILY BASED CARE TRANSITION

Our program resulted in full transformations of two Child Care Institutions (CCIs) — all children under their care are now in family-based care. One of the CCIs have even returned their CCI license, showcasing their full commitment to family-based care. Such a complete transformation is a first for India. It has created a lot of interest in Miracle's approach and work among all stakeholders, including the Government.

OFFICIAL GOVERNMENT PARTNERSHIPS

Miracle Foundation India signed direct MoUs with the Tamil Nadu State Government, followed by Letters of Intent from the Kerala and Madhya Pradesh (Indore) Government Departments. Such opportunities offer invaluable possibilities to scale up our impact.

TOOLS ADOPTED BY STATES

Miracle's program tools, including the Case Management Toolkit, the Individual Care Plan (ICP) and the Social Investigating Report (SIR) are highly appreciated by the State Governments. These are foundational tools that are invaluable in ensuring that vulnerable children are safe and protected.



"There is a feeling in the air at Miracle Foundation, a sense that the world is changing, and thanks to our donors, we are at the forefront of that change."

- Leslie Beasley, CEO Miracle Foundation



OUR HIGHLIGHTS

SCALING OUR PROGRAMS

We developed our team's capacity to implement the program at scale through intensive hand-holding, support, and mentoring. We have also undergone a detailed Organisation Development exercises to create a standardised Human Resources structure and a program implementation model to prepare us for scale.

CHILD TRANSITION SUCCESS

Our work reached 8041 children, a 149% growth over the last year. Overall, we transitioned 443 children from Child Care Institutions to family-based care. A notable fact about this effort is just two children out of these 443 went back to a Child Care Institution, which is less than 0.25% — a gold standard in family-based reintegration. This is a testament to how robust our program methodology is.

NEW & OLD PARTNERSHIPS

This year, we initiated a new partnership journey with the Azim Premji Foundation and consolidated our existing partnership with Unicef India.

ORGANISATIONAL LEADERSHIP

We are in leadership roles at different State and National levels, high-powered committees of the Government, and networks, such as the Government's State-level Working Group on Family-Based Alternative Care, the District-level Foster Care Committee, the India Alternative Care Network, and many others.

CREATING SYSTEMS CHANGE

To reach a family for every child in our lifetime, we must change the very systems that have been separating families. To do this, we launched two initiatives in 2022 that are poised to have far-reaching impact in the years ahead.

ESTABLISHING MFI AS A THOUGHT LEADER

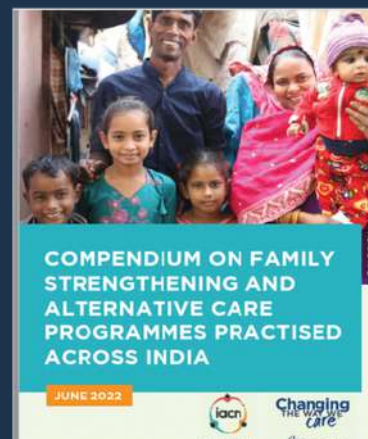
A first-ever National Dissemination Workshop brought together all our major partners on one forum towards the vision of a family for every child. Our vision was also represented in State consultations and strategic planning. We were part of several initiatives to form a roadmap for Family Strengthening and Family-Based Alternative Care.

Immersion visits were organised to Miracle-mentored Child Care Institutions as part of a capacity building program of Government officials as a contribution to policy level change.

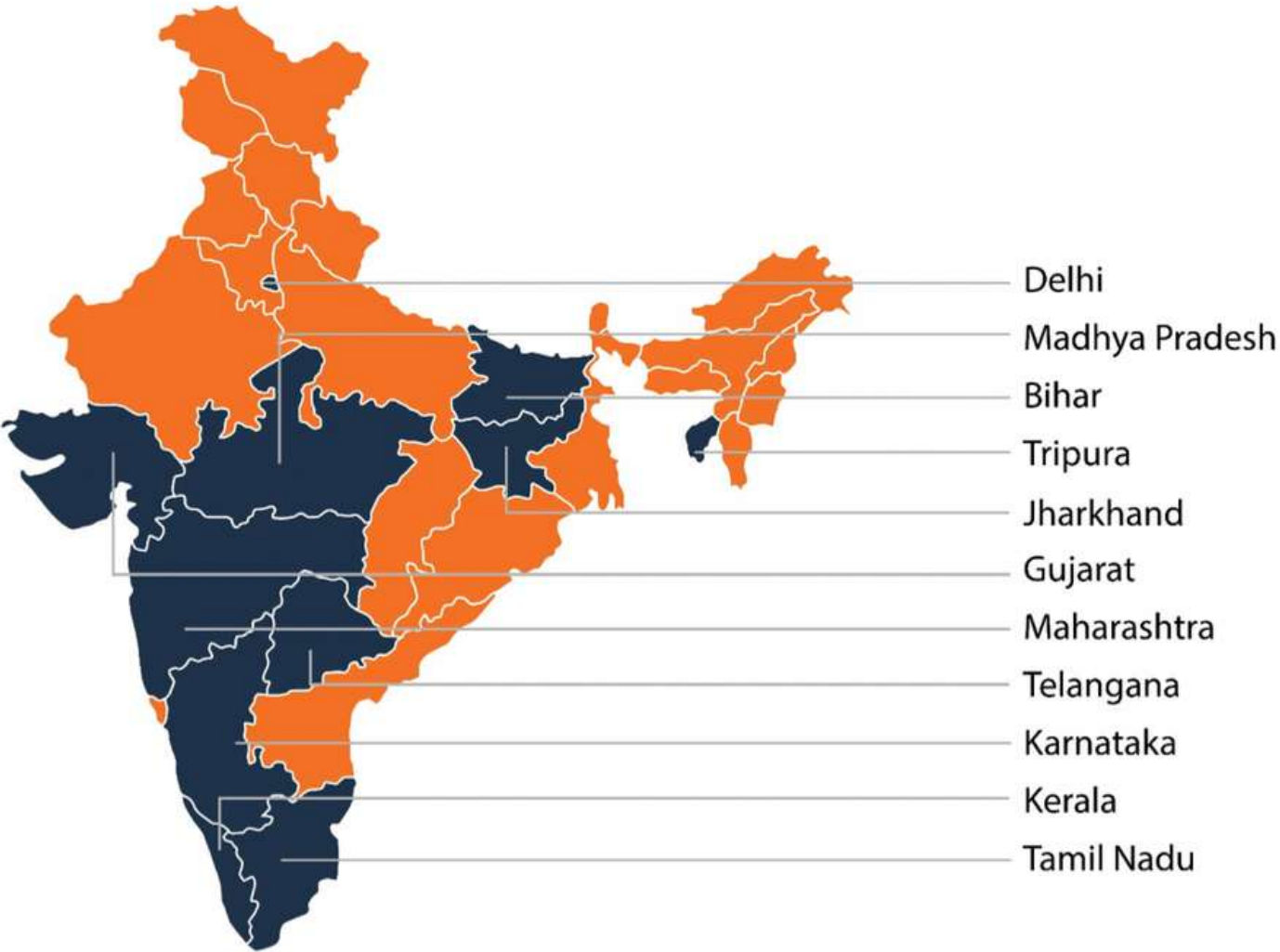
Our initiatives were featured in major industry-based publications this year, including FAQs, a Compendium, a kinship care case documentation by the IACN, and the 'Let's Go Home' report by DASRA

EMPOWERING THE SOCIAL WORKFORCE

Our time-tested capacity-building work created shifts in mindsets that equipped Child Care Institutions, Social Workers, and Case Workers, along with Government officials, to manage children's cases with sensitivity, child-centricity, and empathy. Such a systems change approach aims to orient the social workforce such that institutionalisation of children is a last resort measure only.



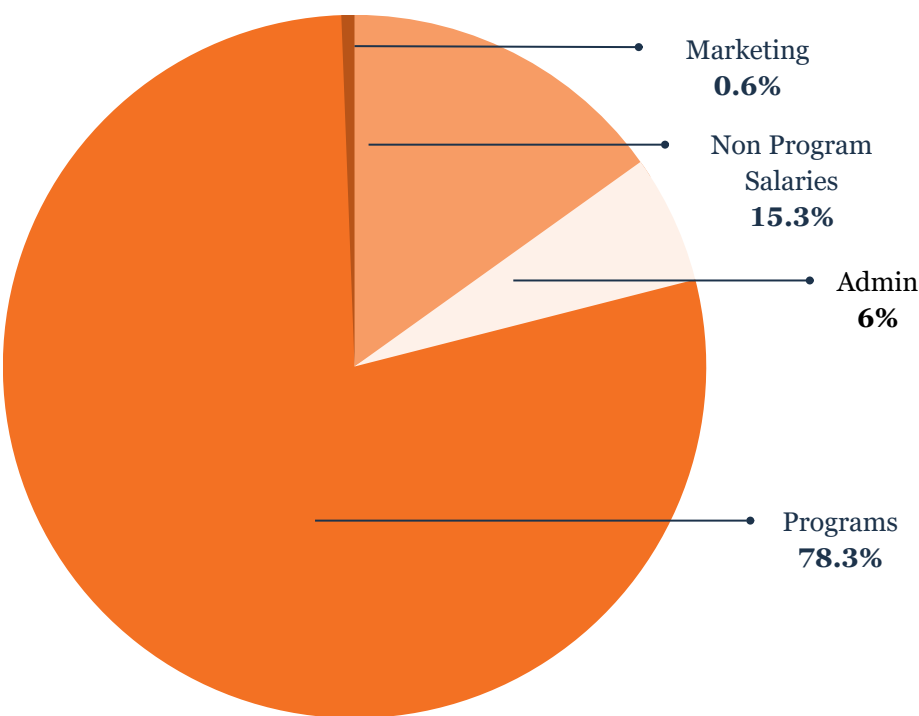
PROGRAM AREAS



States we are actively working in

FINANCIAL HIGHLIGHTS

Miracle Foundation has an unwavering commitment to fiscal responsibility, upholding rigorous standards to ensure the long-term sustainability of our resources. This dedication ensures that vulnerable children, families, and communities will continue to be served for generations to come.



READ OUR FULL FINANCIAL REPORT

Our fiscal year is from April 1st to March 31st.

We are recognized by charity watchdogs for fiscal responsibility and transparency



80 G COMPLIANT

We are an 80G Registered Organization.

We have the FCRA Registration Certificate and the 12A registration. Previous years' Annual Reports and Financial reports are all available online.

THRIVE SCALE IN ACTION



After his father passed away, Navin spent eight years in a childcare institution. To ensure he had a safe place to return, Miracle Foundation used their Thrive Scale™ Methodology. The Thrive Scale focuses on five well-being domains: Physical and Mental Health, Education, Family and social relationships, Home Finances, and Living Conditions. With the help of the Miracle Foundation, learn how Navin was reunited with his family and is now living his childhood dream.

Navin's father passed away when the boy was still very young. Stricken with grief, his mother's mental health slowly deteriorated till there came a day when she was unable to care for her sons at all. Worried about the boys' well-being, their uncle stepped in and admitted them to the local Child Care Institution (CCI). At the time, Navin was 8 and had never been to school. At the CCI, Navin gradually started to learn basic literacy and numeracy and was admitted to a nearby school. He started to develop interests, a primary one being in cooking.

Eight long years passed, and Navin was now in Class 10. The matter of returning back to his family was slowly broached. Initially apprehensive, Navin quickly warmed to the thought of going back home. His social workers continued to engage with him, using conversations, counselling, and other tools. Navin was sent to spend time with his family and was soon able to reignite his relationship with everyone at home, particularly his mother. Social workers conducted home safety checks using Miracle Foundation's Thrive Scale™, which assesses the situation across 5 domains of well-being, as well as a risk assessment.

The process took months of work, but Navin was finally ready to move back in with his family. Using family strengthening tactics, social workers were gradually able to improve the family's livelihood situation. Both his mother and elder brother started earning. Their house -- semi-permanent structure -- was cemented to make it more habitable. Once Navin moved back, home visits continued to make sure the situation did not regress. Miracle's painstaking work paid off when Navin was able to complete school and enrol into college for a degree in hotel management – his childhood dream.

Navin is now 22 years old and well settled at home. As a result of Miracle's intensive work with the family, Navin's younger brother is in college too, studying commerce. Miracle's staff member who knows the family says that this newfound sense of purpose has improved Navin's mother's mental health drastically as well. Although most of Navin's childhood got spent in a CCI, his return back to his family was a momentous event, one that will allow him to heal and build a good life for himself.

OUR PARTNERS





With heartfelt gratitude, we extend our deepest thanks to the supporters making our vision of "A Family for Every Child in Our Lifetime" a reality. We celebrate our achievements and embrace the power of collective effort, knowing that the best, most transformative moments are still to come.



contact@miraclefoundation.org



(011)49506375



G29, Upper Ground Floor, Lajpat Nagar III,
Behind Fab India, Lajpat Nagar, New Delhi
– 110024, India

